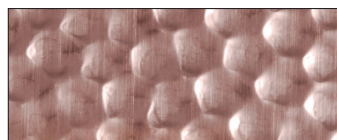
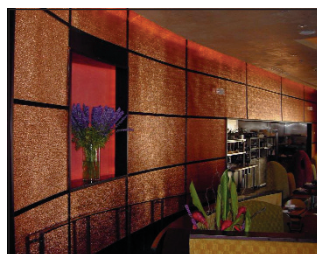


**RIGIDIZED® METALS****COUNTERTOPS AND FLOORING****BACKSPASHES****THE VALUE ADDED PROCESS OF TEXTURIZING OR "RIGIDIZING"**

Whether you're looking for custom backsplashes, countertops, tiles or switch plates, Rigidized® metal products can help you design spaces that make a statement about you! Our products add that perfect accent to any room. Rigidized® metals are used for countertops, walls, floors, ceilings, backsplashes, range hoods and countless applications where metallic beauty and long-term durability are important.

**DRAMATIC METAL FINISHES INCLUDE:**

- powder coated and highlighted stainless steel.
- stunning colored stainless steel.
- low reflectivity matte finish stainless steel.
- "coined" linen, squares and sand-text stainless steel.
- vibration non-directional polish stainless steel.
- random swirl stainless steel.
- bead blasted stainless steel.

**DEEP TEXTURED "RIGIDIZED" METALS:**

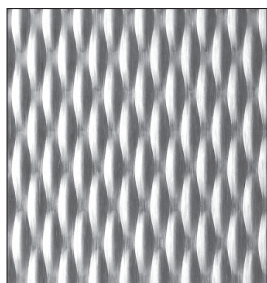
- defy dents due to increased impact resistance.
- resist scratches - reduced surface contact area results in fewer scratches.
- save money - increased durability provides long term cost savings.
- save weight - increased strength allows in the use of lighter gauges.
- control reflections - patterns dissipate light and eliminate glare.

**RIGIDIZED® METALS** are created by a unique process which enhances the durability and beauty of flat metals. The Rigidized Process can be applied to ALL METALS including:

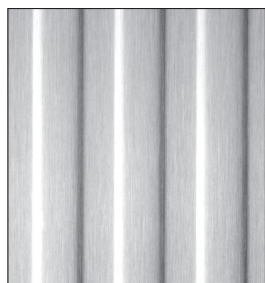
- STAINLESS STEEL
- COPPER
- ALUMINUM
- BRASS
- TITANIUM
- BRONZE
- STEEL
- GALVANIZED
- PERFORATED
- GALVANNEALED



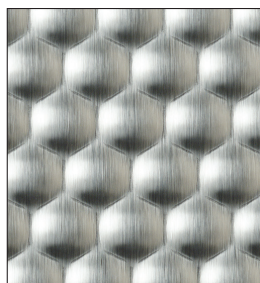
## STANDARD PATTERNS



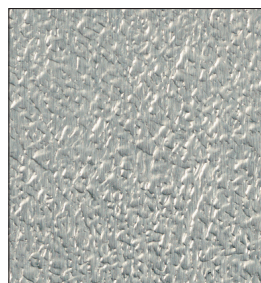
■ 5.WL®



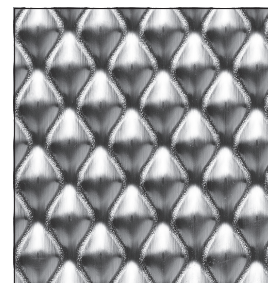
■ 2.FL



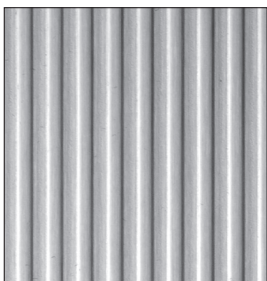
■ 6.HC



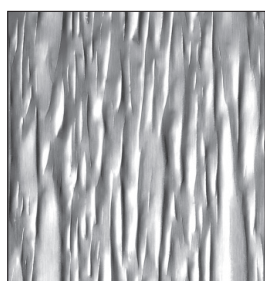
■ 1.SLG



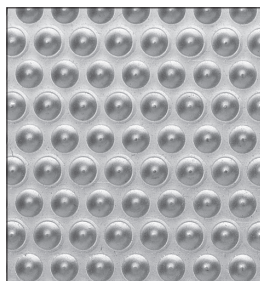
■ 6.WL®



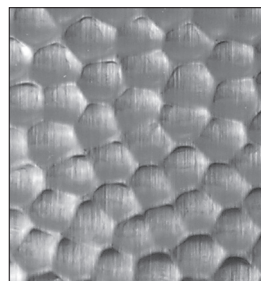
■ 6.SL



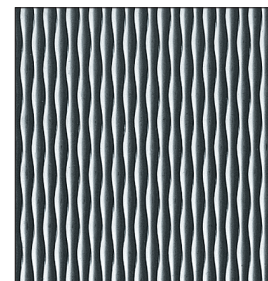
■ 1.CS



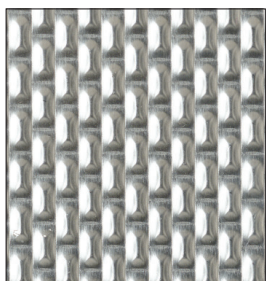
■ 7.DL



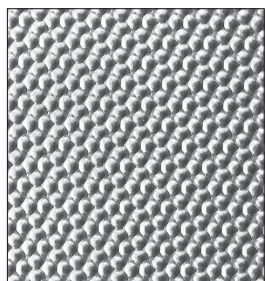
■ 1.HM



■ 2.WL®



■ 4.LB



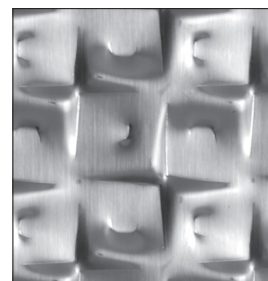
■ 3.ND



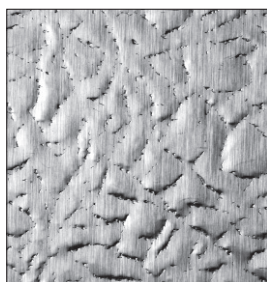
■ RSS 3



■ RTP



■ 1.RL



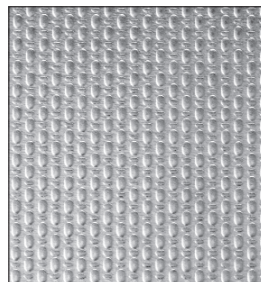
■ 60.LTH



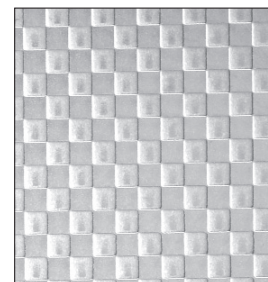
■ 1.NA®



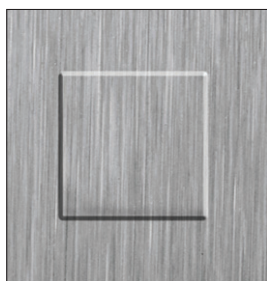
■ SAND-TEX



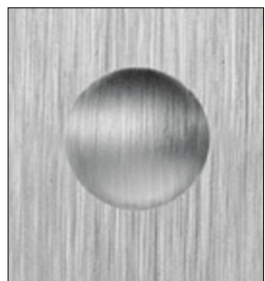
■ LINEN



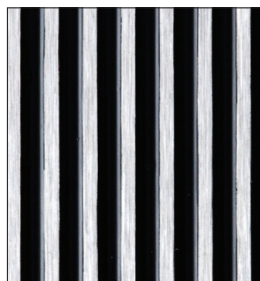
■ SQUARES



RB4® .875" FLATTOP



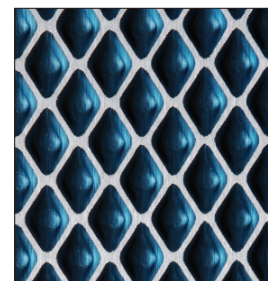
RB2® .750" DOMETOP



DELAWARE IN BLACK



■ 1.HMIN COPPER



MIDDLESEX IN BLUE MIRROR

ALL PATTERNS available in any METAL



**INDUSTRIAL METAL SUPPLY CO.**

metal made easy

LOS ANGELES  
818-729-3333

INLAND EMPIRE  
951-300-9900

ORANGE COUNTY  
949-250-3343

SAN DIEGO  
858-277-8200

PHOENIX  
602-454-1500

TUCSON  
520-441-5900