

SCULPT NOUVEAU Patinas and Metal Finishes

Traditional Patinas

Traditional patinas are mixtures of chemicals that react with the surface of metal to create different colors. The most common formulas are available here as pre-mixed solutions. Many additional formulas are available in the books and videos. The Japanese Brown and Darkening patinas work particularly well on iron and steel.

Blue and Green Traditional Patinas

These patinas may be used on bronze, brass, copper, or the Metal Coatings.



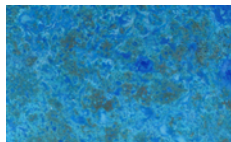
Tiffany Green



Light Green



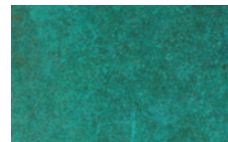
Mint Green



Powder Blue



Blue (Indoor)



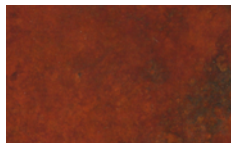
Cupric Nitrate

Brown and Darkening Traditional Patinas

These patinas may be used on bronze, brass, copper, or the Metal Coatings. In addition, the Japanese Brown and Darkening Patinas create a beautiful finish on iron and steel.



Ferric Nitrate



Ferric Nitrate /
Ferric Chloride



Tan



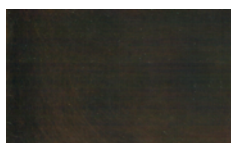
Potassium
Dichromate



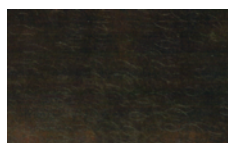
Mahogany



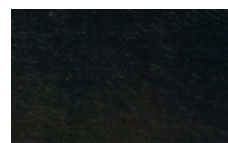
Japanese Brown



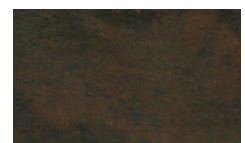
Deep Brown



Antiquing



Darkening



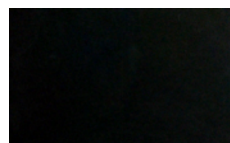
Liver of Sulfur

Birchwood Casey Patinas

These darkening patinas are specific to the underlying metal.



A14/A15 Black
for Aluminum



PC-9 Black for
Iron & Steel



M-24/M-20
Black for Bronze,
Brass, & Copper



M-38 Brown for
Bronze, Brass, &
Copper

SCULPT NOUVEAU Patinas and Metal Finishes

Vista Patinas

Vista patinas are a two part patina combined in one solution. First, a traditional base patina reacts with the metal to produce a beautiful green on bronze, brass, and copper, or an exquisite rust on iron and steel. Then, colored oxides are added to this base resulting in a unique marbled patina.

Vista Patinas on Bronze, Brass, or Copper



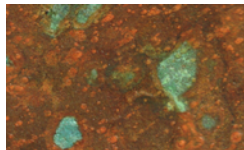
Vista Blue



Vista Green



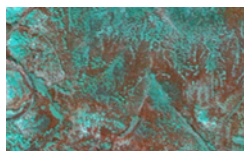
Vista Yellow



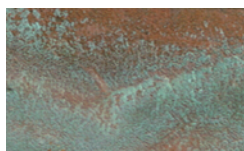
Vista Rust



Vista Burgandy



Vista Red



Vista Brown



Vista Black

Vista Patinas on Iron or Steel



Vista Blue



Vista Green



Vista Yellow



Vista Rust



Vista Burgandy



Vista Red



Vista Brown



Vista Black